



FORD
FOUNDATION



- **Building Resilient Ecosystem,
Sustainable Impact Organizations
for Ford Grantees & Beyond**



Phase 2

(Year 2-5)



Program Rationale



When CSOs/NGOs lose their big donors, their existence seems to be at risk, this is naturally a big concern for Ford Foundation. As Ford phases out of organizations, it now shifts its focus to promote and ensure longevity by providing the tools and knowledge they need. As the tools are built and collected, these will also be published for any NGOs to access and use to support their organization too. This will give Ford a chance to create positive impact beyond their current and future grantees.

Resource Hub

Learning curriculums, videos and webinars will be tailored and created according to the needs assessed.

Events, Workshops & Mentoring

Ford grantees will have access to monthly webinars and mentoring sessions by PLUS and selected relevant partners.

CSO/NGO Database

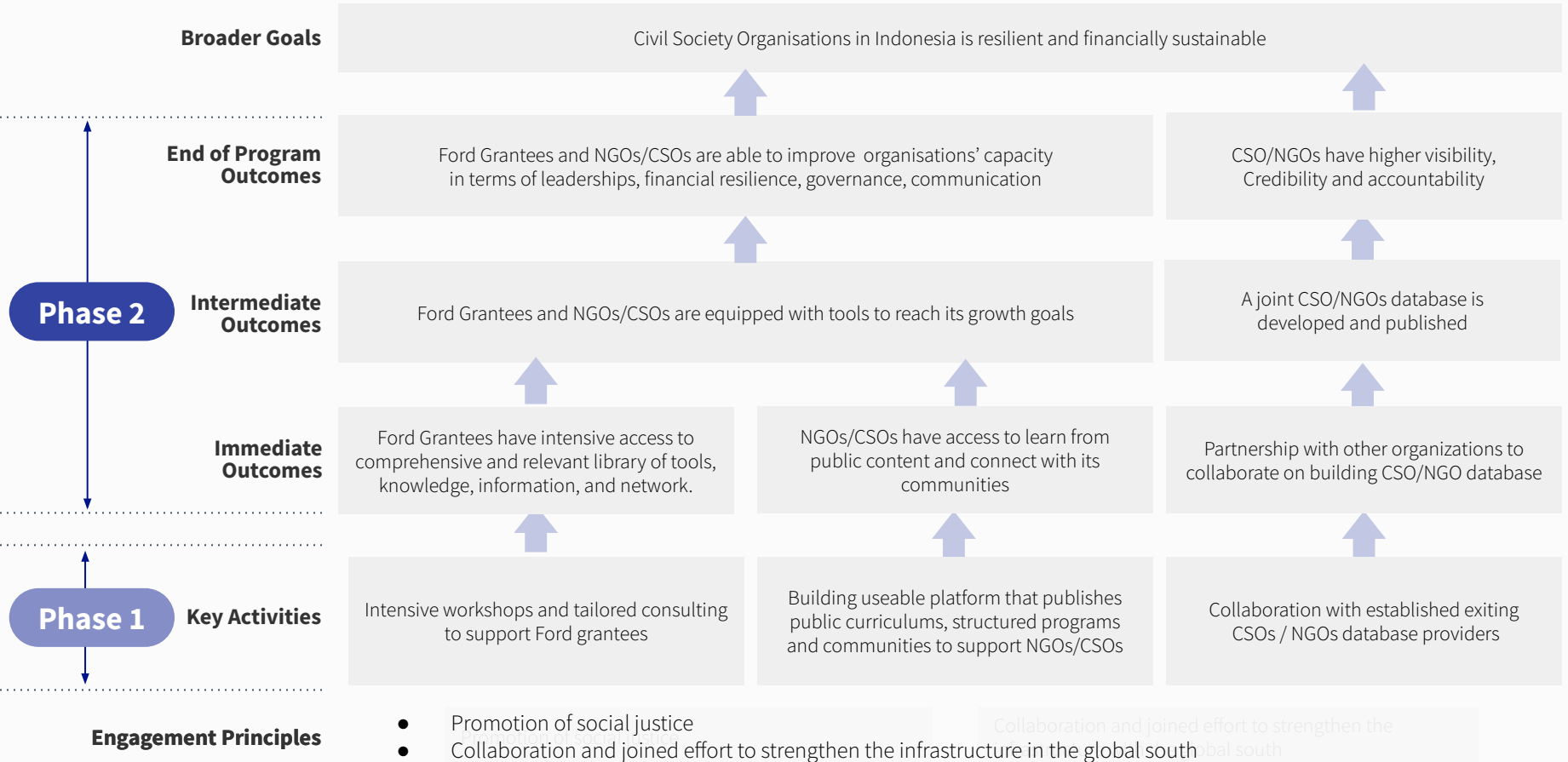
Collaborate with other organizations that have designed and implemented the CSO/NGO mapping to help increase sense of confidence and giving between donors and impact organizations

NGO Incubator Lab

Collaborate with other organizations to design tailored incubation programs for NGOs with interest to explore additional financing strategy (through social entrepreneurship, product and service development, and etc.)



Overall Program Logic



Program Overview



The Resource Hub project is a 5-year plan developed and proposed by PLUS - Platform Usaha Sosial to support Ford Foundation in developing a learning ecosystem to improve financial resiliency of civil society organisations in Indonesia through building an inclusive and interactive resource hub.

The proposal is divided into 2 Phases, with Phase 1 focusing on building the foundation of the resource hub. In this proposal, we will focus on Phase 2 intervention strategies.



Phase 2: Program Rationale



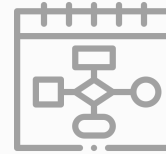
In Phase 2, with the Resource Hub + and partnerships started in Phase 1, the platform will be launched for Ford's grantees, Civil Society Organisations, and other impact organisations in Indonesia. The platform should contain not just curriculums that can be accessed at all time, but a monthly webinar/workshop and consultation check-in will be provided for grantees. On an external level, the partnership building and strengthening local trainers will continue throughout the program.

This phase will also be where PLUS explore business models to ensure Resource Hub's sustainability. Based on the learnings from Phase 1, PLUS will start developing a roadmap for NGO incubator lab, in collaboration with capacity builders as well as establishing partnerships with database providers organisations.

Phase 2: Program Objectives and Goals



Improve and strengthen a **resource hub online platform** and support ecosystem to improve financial resilience of civil society organisation in Indonesia.



Continue on **developing and providing access** to series of workshop, training, and mentorship to improve the capacity of Ford Foundation BUILD grantees.



Open **resource hub access** and capacity building programs for wider civil society organizations and relevant communities in Indonesia.



Activate the **networking channel and CSOs/NGO directory** to support organisation to connect with donors and potential partners.



Develop a **lesson learned** from the resource hub program through feedback and iteration.

Phase 2: Target Beneficiaries





Phase 2: Collaboration Structure

RESOURCE HUB

CAPACITY BUILDERS (CB)

- Program Experts & Consultants: **Core Organization, CECT, SIAP**
- Other enabler organizations (**SmartPLUS**, etc) may be engaged according to the grantee's needs
- Key Output: Intensive Workshops, Consultation, Webinars

CORE ORGANIZATIONS

- Program Lead & Coordinator: **PLUS**
- Core Implementing Partner: **Remdec, Penabulu & YBIE**
- Program Sponsor & Advisor: **Ford Foundation***
- Key Output: Coordination with CB and Content Builders to create a systemic workflow and content pipeline

CONTENT BUILDERS

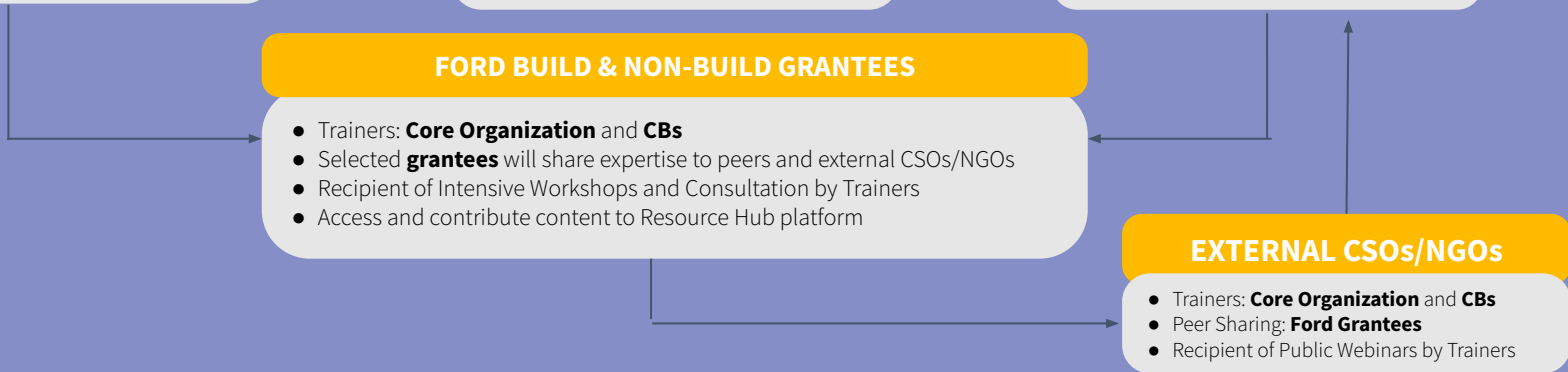
- Main Curator & Content Developer: **PLUS**
- Content Provider: In addition to **Spring Strategies** existing content, **CBs** will provide their expertise in producing content pipeline
- Key Output: Content built here will be used for Resource Hub Platform, Workshops and Webinar

FORD BUILD & NON-BUILD GRANTEES

- Trainers: **Core Organization** and **CBs**
- Selected **grantees** will share expertise to peers and external CSOs/NGOs
- Recipient of Intensive Workshops and Consultation by Trainers
- Access and contribute content to Resource Hub platform

EXTERNAL CSOs/NGOs

- Trainers: **Core Organization** and **CBs**
- Peer Sharing: **Ford Grantees**
- Recipient of Public Webinars by Trainers





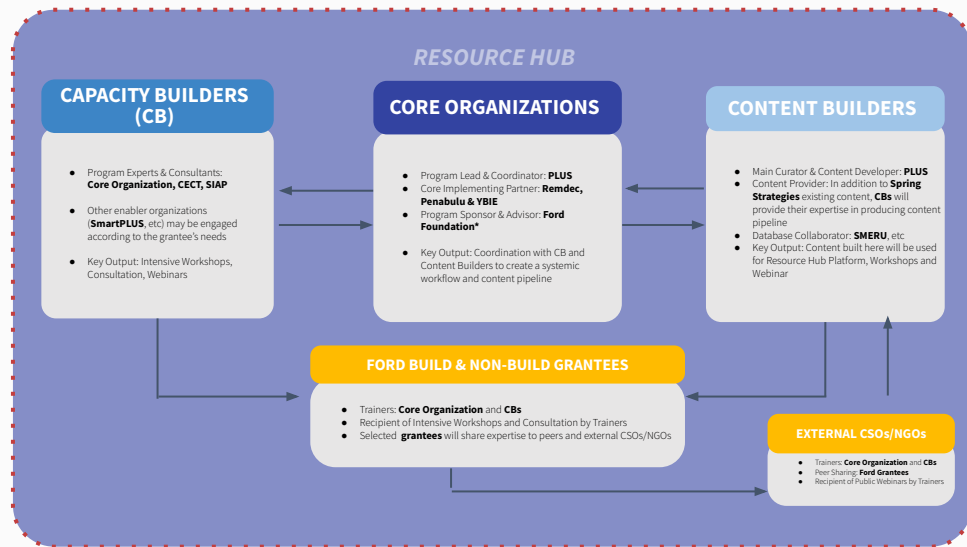
Phase 2: Collaboration Structure

Considered the Core Organizations*, PLUS will be the main facilitator and program leader. Alongside with REMDEC, Penabulu & YBIE are our main implementation partners. These organizations are chosen as they compliment the expertise that PLUS lacks and will require support in.

Collectively as one unit, all of us will design and implement the workshops and trainings that will be given to the BUILD and non-BUILD grantees.

As the program progresses, other Capacity Builders such as CECT, SIAP will be engaged as experts and/or consultants, depending on the needs from the grantees themselves.

Content Builders will consists of every Core Organizations, CBs and even Ford Grantees's contribution. The content from this collective effort will then be used on the Resource Hub platform and Workshop/Webinar content. Database collaborators will also fall under Content Builders as the consolidated database will be available on the Resource Hub platform.



*brief profile of the organizations is provided at the end of this document

Year 2-5: Ecosystem Building



Key Activities		
Organisation capacity strengthening	For New and OLD BUILD Grantees	Continuing to provide series of workshop and trainings for new and old BUILD Grantees that need to strengthen their capacity - mentoring
	BUILD and NON-BUILD Grantees	<p>Providing access to mentoring and consultations for BUILD grantees and CSOs in Indonesia</p> <p>Conducting webinar for public</p>
Members & Community Building		Promoting the resource hub to broader community to gather more organisation to participate
		Building database of CSO/NGO in Indonesia
		Choosing relevant partners to receive trainings - Training of trainers
		Map out the vital ecosystem players and create a MoU partnerships to expand network and resources as much as we can
Platform Improvement & Content Development		<ul style="list-style-type: none"> • Adding resources (material and tools) and features. • Maintenance and system refinement • Designing and developing foundation of CSOs/NGOs directory • Designing and developing foundation of NGO incubator lab
Connect and collaborate with Global South		Conduct sharing session and explore further collaboration with Global South Resource Hub (a) Sharing session (b) co-hosting for global south webinar (c) co-hosting workshop/training
Business Model Exploration		<ul style="list-style-type: none"> • Develop and test run business models identified • Identify Fundraising/crowdfunding mechanism

Year 2-5: Building Sustainability



		Key Activities
Organisation capacity strengthening	For New BUILD Grantees	Providing workshops and trainings for new BUILD grantees
	BUILD and NON-BUILD Grantees	Providing access to mentoring and consultations for BUILD grantees and CSOs in Indonesia
		Conducting webinar for public
Updating Content & Events		<ul style="list-style-type: none"> ● Resource Hub roadshow: Hosting small community events and hosting public on site seminar *
Community & Partnership Outreach		<ul style="list-style-type: none"> ● Evaluate and pivot partnerships that have been running ● Evaluate and pivot the approaches for community/ organization development <p><small>*on site activities will depend on people behaviour after pandemic</small></p>
Platform Improvement & Content Development		<ul style="list-style-type: none"> ● Adding resources (material and tools) and features. ● Maintenance and system refinement ● Partner with other organisations to design CSO/NGO directory to support organization to connect with potential donors ● Partner with other organisations to develop NGO incubator lab
Resource Hub program reflection		<ul style="list-style-type: none"> ● Develop a lesson learned from the resource hub program through feedback and iteration.
Business Model Strengthening		<ul style="list-style-type: none"> ● Exploration of the different revenue models mentioned in previous slide ● Evaluate and pivot the business models executed

Phase 2: Key Indicators of Success



Broader goals:

Improve financial resiliency of impact-driven organizations in Indonesia through building an inclusive and interactive resource hub and support ecosystem.

Specific Objective of Phase 2:

Continue to improve and strengthen a resource hub online platform and support ecosystem to improve financial resilience of broader civil society organisation and communities in Indonesia. Resource Hub to explore business sustainability through business model explorations.

Indicator: (a) a set of tools, knowledge and information is improved and documented, (b) resource hub is accessible not only for BUILD grantees, but also other relevant organisations. (c) Number of workshop/training and consultation are conducted. (d) Number of CSOs/NGOs directory is available in the system (e) Number of clients/donors/funders

Means of verification: # of resources (learning materials, workshops, videos, mentors) available. # of workshop/training and consultation. # of partnership contracts



Phase 2: Key Indicators of Success

Result 1: To improve and strengthen a resource hub online platform



Indicator: a set of knowledge library and tools is being updated, new content and curriculum is added to the platform, and add new features.



Mean of verification
Accessible website filled with comprehensive and various information **and** relevant knowledge resources.

Result 2: To make resource hub become accessible for broader organization in Indonesia



Indicator: CSOs/NGOs (non-BUILD) are aware and can access resource hub



Mean of verification
List of CSOs/NGO (non-build) is registered and mapped out to resource hub online platform

Result 3: To continue and expand the capacity building program through workshop/ trainings and consultation, and be more accessible for broader organizations



Indicator: Targeted BUILD and NON BUILD Grantees are aware of the organisations' needs and have the tools to improve and grow.



Mean of verification
Report of activities, key learnings and testimonials from BUILD and NON BUILD Grantees

Result 4: To develop the CSOs/NGOs directory for support organisation to connect and build network



Indicator: Mapping out the potential CSOs/NGOs in Indonesia and put the lists into the resource hub system



Mean of verification
CSO/NGO directory is accessible and active on resource hub online platform.

Result 5: To explore business models for PLUS' resource hub to run independently and expand to wider reach.



Indicator: PLUS to diversify by securing partnerships/ donors/funders



Mean of verification :
Report of learnings and strategic planning document (short-term, mid-term and long-term), Contracts signed



Year 2-3: Program Timeline

Year 2 - 2022

Year 3 - 2023

Q1

Q2

Q3

Q4

Q1

Q2

Q3

Q4

- Providing workshop and trainings for new BUILD Grantees and other organisation
- Mentoring/consultations will follow workshop and training schedules for each organisation

Webinar for public

Webinar for public

Webinar for public

Webinar for public

Mapping ecosystem players to identify relevant partners that will receive training

Training of Trainers

Need assessment for contents and features

Adding new knowledge resources and features

Design & data collection for CSOs/NGOs directory

Promoting and advocating for Resource Hub

Online platform maintenance & refinement

Business Model Planning & Exploration



Organization Capacity Strengthening



Online Platform Development and Improvement



Year 4-5: Program Timeline

Year 4 - 2024

Year 5 - 2025

Q1

Q2

Q3

Q4

Q1

Q2

Q3

Q4

- Providing workshop and trainings for new BUILD Grantees and other organisation
- Mentoring/consultations will follow workshop and training schedules for each organisation

Webinar for public

Hosting small communities events/ on site seminar

Webinar for public

Webinar for public

Adding new knowledge resources and features

Design & data collection for CSOs/NGOs directory

CSO/NGO directory Activation

Online platform maintenance & refinement

Business Model Planning & Exploration

Program evaluation and lessons learned

Reporting



Organization Capacity Strengthening



Online Platform Development and Improvement

— Profile of Key Collaborators



PLUS

PLUS Foundation was established to carry out social and humanitarian activities in relation to social impact and entrepreneurship. One of our missions is to provide a platform and pathway for increasing the potential of Indonesian society in creating economic independence through entrepreneurship.

REMDEC

Resource Management and Development Consultant known as REMDEC is a professional consulting institution specializing in the capacity building for civil society organizations (CSOs) and other development actors.

Penabulu

Penabulu Foundation is a resource organization for civil society in Indonesia, Penabulu works to mobilize, manage and distribute resources in any form to support the work of civil society in Indonesia.

YBIE

Yayasan Bina Integrasi Edukasi focuses its activities on the area of capacity building for non-profit organizations and works to provide direct technical assistance in the form of physical assistance to non-profit organizations on financial, human resource and institutional development

CECT

Center for entrepreneurship, Change, and Third Sector (CECT) Trisakti University aims to contribute to the development and prosperity of Indonesia in the area of sustainability, social responsibility and community entrepreneurship through research, training, consultation and collaboration with relevant stakeholders.

SIAP

Social Innovation Acceleration Program aims to become a launchpad for social enterprises, and work with them to create long-term sustainable impact and solve some of the country's most pressing economic and social issues.

Profile of Key Collaborators



Spring Strategies

Spring Strategies is a future forward organization that supports and accompanies social and climate justice leaders in accelerating individual and collective capacity to solve the critical problems of our time.

SMART PLUS

Smartplus Accelerator is a comprehensive business accelerator in Indonesia. It uses coaching, mentoring, and Smart Business Map™ methodology as proven tools to empowering entrepreneurs and businesses throughout Indonesia.

Kota Kita

Kota Kita is a non-profit organization based in the Indonesian city of Solo with expertise in urban planning and citizen participation in the design and development of cities. Kota Kita believes that citizens should be at the heart of the decision-making process that determines the environment and the quality of living of the urban centers they reside in.

ICW

Indonesia Corruption Watch (ICW) was established amid major political reforms in 1998. Instigated by several Indonesian Legal Aid Foundation (YLBHI) activists, ICW was founded on the premise that corruption must be eradicated, as it continues to impoverish people and obstruct justice.

Legend

Core Organizations

Capacity & Content Builders

Ford Grantees



FORD
FOUNDATION



•
Thank you!